

Self-Lube® Units

The Self-Lube® units are a versatile range of housings and inserts manufactured to NSK global specification for materials and quality - all cast iron housings supplied with regreasing facility, capable of taking up initial misalignment during assembly. The general housing types are pillow blocks, flange units, take-up units, cartridge units and hanger units. Suitable for a wide range of industry applications.

Product Features

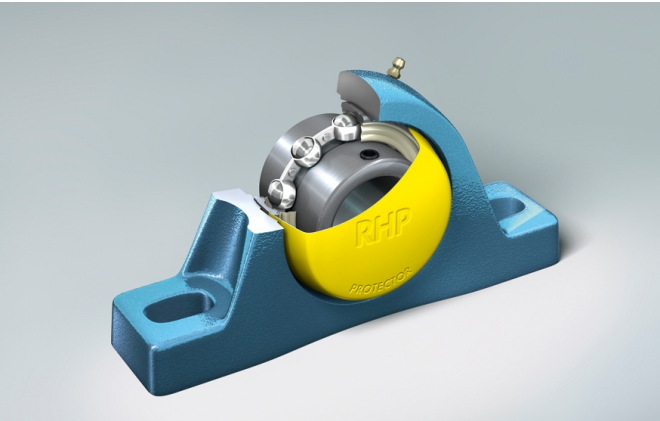
- Range of diverse casting and pressed steel housings (15 alternatives).*
- Inserts - 3 main locking arrangements and 2 inner ring length options.*
- Three main seal options - standard, triple lip & flinger/standard.
- Postively located steel end cap available for units up to 60mm shaft.
- All cast iron housings supplied with regreasing facility.
- * For all options see Self-Lube® catalog

Benefits

- Simple cost effective bearing arrangement - units can be regreased.
- Can be used on fabricated and general engineering equipment.
- Secure shaft locking for all speed, load and vibration conditions.
- Effective sealing for all conditions and applications.
- Protects from the dangers of rotating shaft ends.

Condition Description

- Arduous Environments
- Contamination
- Corrosive Environment
- High Temperature
- Misalignment



Industries

- Agriculture
- Cement
- Construction
- Fans and Blowers
- Food and Beverage

(T)	NP	45	(DEC)	(FS)
-----	----	----	-------	------

Description

(T)	Triple Lip Seal (optional)
NP	Housing
45	Bore
(DEC)	Locking options
(FS)	Seal Options