

## NSKHPS Spherical Roller Bearings

NSKHPS Spherical Roller Bearings are state-of-the-art material technology bearings, suitable for high speeds and high loads. The enable equipment downsizing and are suitable for a wide variety of applications. HPS sphericals are available with both steel or brass cage.

### Product Features

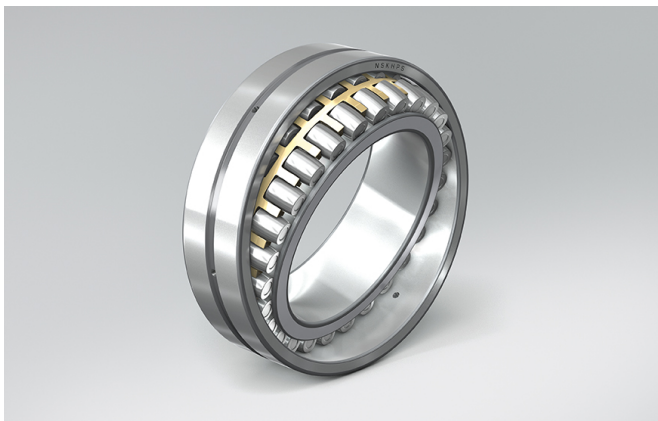
- Highest load rating SRB's
- Optimal raceway design and surface finishing
- Brass cage design (CAM) or strengthened steel cage (EA)
- High cleanliness Z-steel
- Temperature stability: up to 200° C
- 40 mm to 260 mm bore size

### Benefits

- Up to twice the operating life
- Up to 20% higher limiting speed
- Dynamic load rating: 25% higher
- Improved productivity lowers maintenance cost
- High load rating enables downsizing

### Condition Description

- High Load
- High Speed
- High Temperature
- Misalignment



### Industries

- Fans and Blowers
- Food and Beverage
- Industrial Pumps and Compressors
- Material Handling
- Paper

232	36	CA	M	K	E4	C3	S11	*H*
-----	----	----	---	---	----	----	-----	-----

#### Description

232	Bearing type and series
36	Bore
CA	Internal Design
M	Cage
K	Design of Rings
E4	Design of Rings
C3	Radial Internal Clearance
S11	Special Specification
*H*	NSKHPS