

Double Row Angular Contact Ball Bearing - High Capacity

NSK's High Capacity Double Row Angular Contact Ball Bearings were designed especially for pumps. Due to their 30° contact angle, they can accommodate higher axial loads generating longer life, minimizing downtime and reducing maintenance costs.

Product Features

- High axial load capacity with 30° contact angle
- Steel cage
- High dimensional and running accuracy (P6)
- Heat treatment to run up to 150°C
- Shielded or open design

Benefits

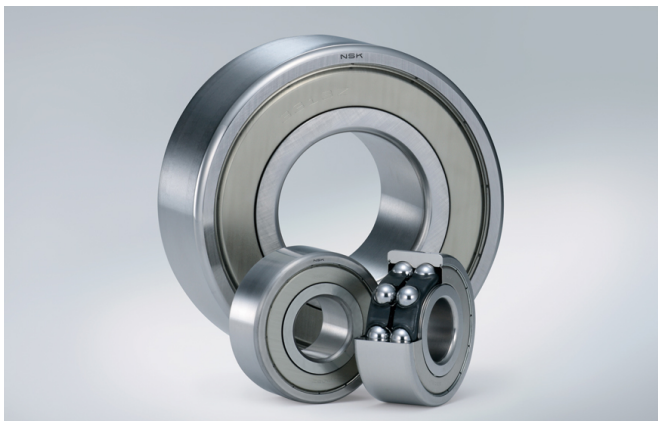
- Long life
- Improved axial load capacity
- Downsizing possibilities

Condition Description

- High Load
- High Speed
- High Temperature

Industries

- Fans and Blowers
- Paper
- Petrochemical
- Quarrying, Mining and Construction
- Utilities



3308	F	W1	ZZ	CG 5	P6	**	X26
------	---	----	----	------	----	----	-----

Description

3308	Basic Bearing Number
F	30° contact angle
W1	Steel cage
ZZ	Two Shields
CG 5	Radial Internal Clearance
P6	Accuracy
**	
X26	Heat stabilization