

Cylindrical Roller Bearing - Outer ring guided brass cage

Single Row Cylindrical Roller Bearing have been designed to meet the tough operating conditions found in oil-free screw compressors. Due to its high strength outer ring guided brass cage with improved accuracy, it can reach extremely high speeds ensuring a long running life while minimizing downtime and maintenance costs.

Product Features

- Improved internal design
- Higher load ratings
- Increased limiting speed
- High strength outer ring guided brass cage
- High dimensional and running accuracy (P6, P5)

Benefits

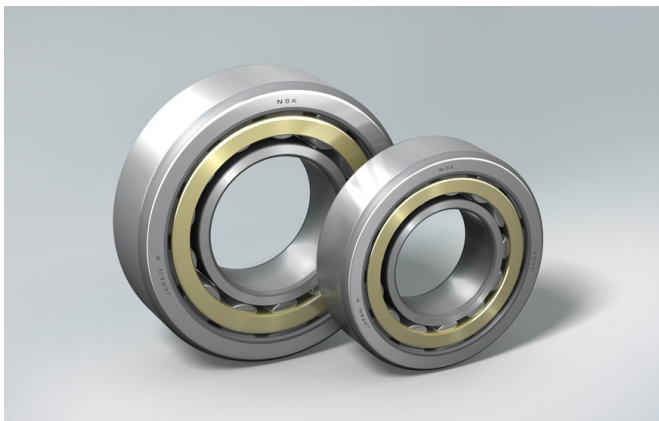
- Long life
- High speed capabilities
- Reduced heat generation, vibration and noise

Condition Description

- High Accuracy
- High Load
- High Speed
- High Temperature

Industries

- Chemical and Pharmaceutical
- Industrial Pumps and Compressors
- Petrochemical



NU 308 E MM C3 P6

Description

NU	Bearing Type
308	Dimension / Bore Number
E	High Capacity Design
MM	1 piece brass cage outer ring guided
C3	Radial Internal Clearance
P6	Accuracy