

Angular Contact Ball Bearings BMPC

BMPC Angular Contact Ball Bearings are designed specifically to meet the rigorous demands of centrifugal pumps. Their high-strength, machined-brass cage provides superior reliability in precision- manufactured bearings for the harshest of API 610 pump applications.

Product Features

- 40 degree contact angle
- Brass cage
- Universal design
- P6 accuracy
- Reduced axial clearance range

Benefits

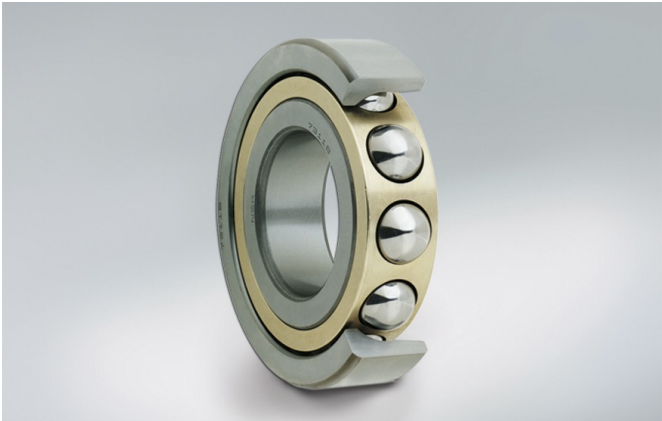
- High contact angle to support higher axial loading and medium speeds
- Strong cage design for high reliability
- Higher accuracy for cooler running
- Specific axial clearance to avoid ball skidding
- Universal design for pairs or triplex arrangements

Condition Description

- High Load
- High Speed

Industries

- Industrial Pumps and Compressors
- Petrochemical



73	10	B	SU	A**	P6
----	----	---	----	-----	----

Description

73	Bearing Series
10	Bore Number
B	Contact Angle (B: 40°)
SU	Arrangement (SU: Single Universal)
A**	Axial Clearance (** in µm)
P6	Accuracy