



MONOCARRIER™ LINEAR ACTUATOR QUICK SHIP PROGRAM

Selected sizes of NSK's Monocarrier™ linear actuator product line can ship with short lead time*. The Quick Ship Program is tailored for prototypes and small-volume automation projects.

PROGRAM FEATURES

- › Monocarrier sizes: MCM03, MCM05, MCM06.
- › Most standard accessories are available in stock. NSK can install the accessories, on request.
- › Quantity is generally limited to 15 pieces per order but larger orders may be accepted on a case-by-case basis. Please contact NSK.

APPLICATIONS

- › Factory Automation
- › Medical
- › Semiconductor

ACCESSORIES INCLUDE

- › Direct and side mount motor brackets
- › Proximity and photo sensor kits and sensor mounting rail
- › Top and side cover kits
- › Multi-axis combining brackets and gantry brackets
- › Sanyo Denki motors

*NSK will provide exact lead time upon request.

STAY IN MOTION. STAY IN CONTROL.

MONOCARRIER™ LINEAR ACTUATOR QUICK SHIP PROGRAM



DESIGN FEATURES & BENEFITS

Lightweight, Compact Design, All-in-One Structure

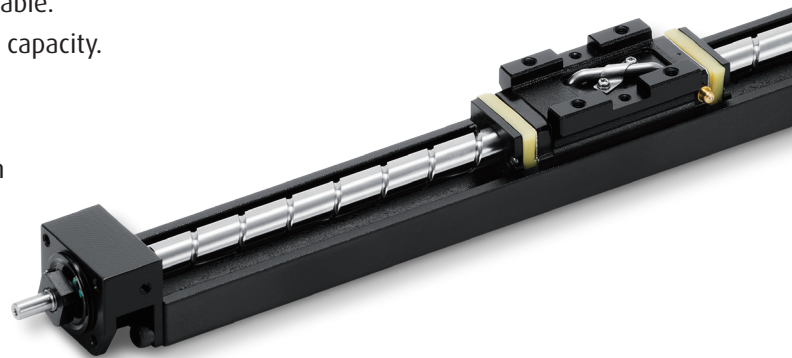
- › The all-in-one-structure integrates a ball screw, linear guide and support bearings into a single unit to significantly reduce design and installation time.
- › Multiple datum planes, on the bottom and a lateral side of the rail, facilitate highly accurate installation.
- › A wide selection of size, stroke and lead combinations is available.
- › Double slider option on MCM05 and MCM06 for increased load capacity.

Long-Term Maintenance-Free Operation

- › Use of NSK K1™ Lubrication Unit and grease maintains smooth lubricating performance for 5 years or 10,000 km.
- › Use in applications where lubrication is difficult to apply or excessive leakage may be detrimental to the environment.
- › Clean Room grease specification available upon request.

Superb Anti-Rust Capability

- › Rust-resistant, low temperature chrome plating on bodies and sliders.



NSK MONOCARRIER™ QUICK SHIP REFERENCE CHART

STANDARD COMBINATIONS - SINGLE SLIDER														
MODEL		03						05				06		
LEAD		1	2	5	10	12	15	5	10	20	30	5	10	20
STROKE	50													
	100													
	150													
	200													
	250													
	300													
	400													
	500													
	600													
	700													
	800													

STANDARD COMBINATIONS - DOUBLE SLIDER						
MODEL		05		06		
LEAD		10	20	5	10	20
STROKE	60					
	110					
	160					
	210					
	310					
	410					
	510					
	610					
	710					