

Unit: mm

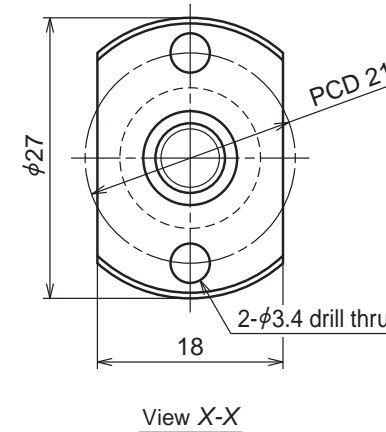
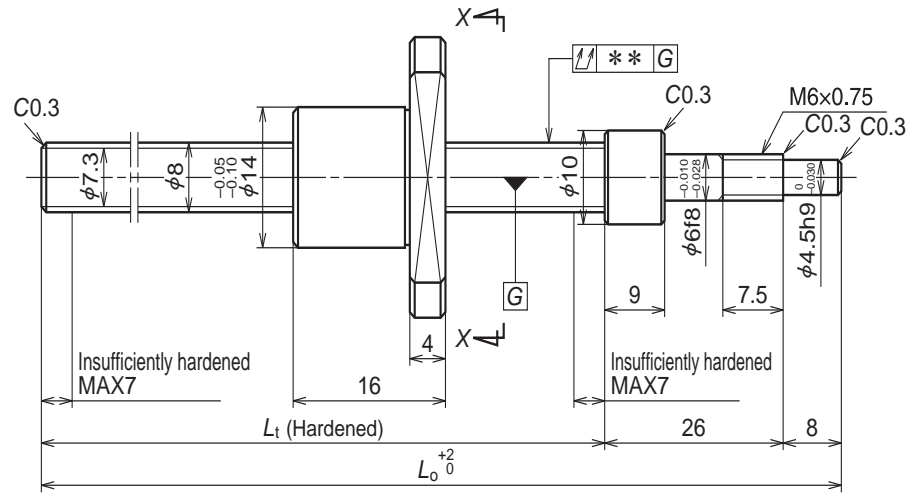
Ball screw specification		
Shaft dia.xLead / Direction of turn	6×1/Right	
Ball recirculation	Deflector	
Ball dia. / Ball circle dia.	0.800/6.2	
Screw shaft root dia.	5.2	
Effective turns of balls	1×3	
Accuracy grade / Axial play code	Ct7/S	
Basic load rating (N)	Dynamic C_a	520
	Static C_{0a}	925
Axial play	0.020 or less	
Dynamic friction torque (N·cm)	1.0 or less	
Spacer ball	None	
Factory pre-packed grease	Refer to the remarks 2.	
Recommend support unit		
WBK04R-11	(Round, fixed side)	

Unit: mm

Ball screw No.	Stroke		Screw shaft length	
	Nominal	Maximum (L_t -Nut length)	L_t	L_o
RMA0601C7S-160	100	124	139	160
RMA0601C7S-260	200	224	239	260

Lead accuracy			Shaft run-out**	Mass (kg)	Permissible rotational speed N (min ⁻¹)
Target compensation T	Deviation e_p	Variation v_{300}			
0	0.052	0.052	0.060	0.045	3000
0	0.085	0.052	0.090	0.065	3000

- Remarks
1. We recommend NSK support bearing kit (page B445).
 2. Only rust preventive oil is applied at time of delivery. Please apply lubricant (oil or grease) before use. Refer to page D13 on details.
 3. Permissible rotational speed is determined by a d-n value and a critical speed. See page B169 and page B51.



Unit: mm

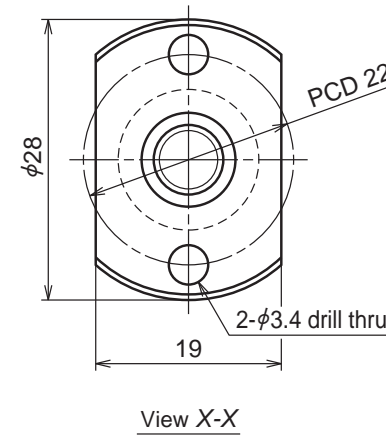
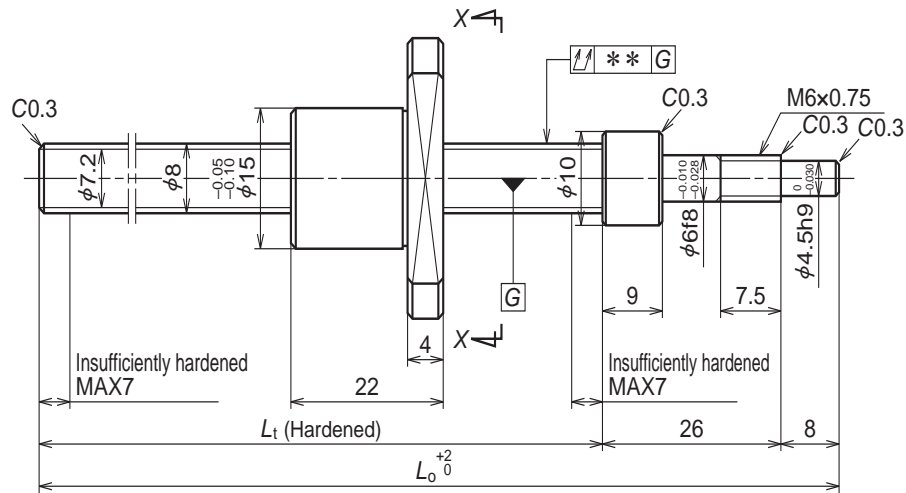
Ball screw specification		
Shaft dia.xLead / Direction of turn	8×1/Right	
Ball recirculation	Deflector	
Ball dia. / Ball circle dia.	0.800/8.2	
Screw shaft root dia.	7.2	
Effective turns of balls	1×3	
Accuracy grade / Axial play code	Ct7/S	
Basic load rating (N)	Dynamic C_a	600
	Static C_{0a}	1290
Axial play	0.020 or less	
Dynamic friction torque (N·cm)	1.0 or less	
Spacer ball	None	
Factory pre-packed grease	Refer to the remarks 2.	
Recommend support unit		
WBK06R-11	(Round, fixed side)	

Unit: mm

Ball screw No.	Stroke		Screw shaft length	
	Nominal	Maximum (L_t -Nut length)	L_t	L_o
RMA0801C7S-180	100	130	146	180
RMA0801C7S-280	200	230	246	280

Lead accuracy			Shaft run-out**	Mass (kg)	Permissible rotational speed N (min ⁻¹)
Target compensation T	Deviation e_p	Variation v_{300}			
0	0.052	0.052	0.060	0.085	3000
0	0.085	0.052	0.090	0.12	3000

- Remarks
1. We recommend NSK support bearing kit (page B445).
 2. **Only rust preventive oil is applied at time of delivery. Please apply lubricant (oil or grease) before use.** Refer to page D13 on details.
 3. Permissible rotational speed is determined by a d-n value and a critical speed. See page B169 and page B51.



Unit: mm

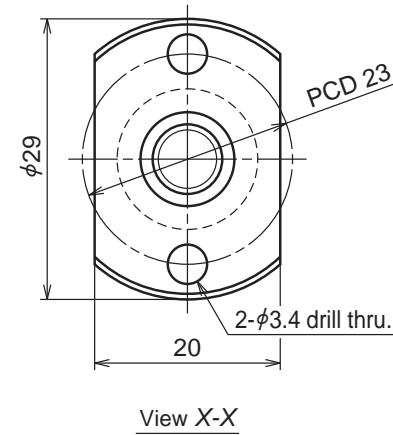
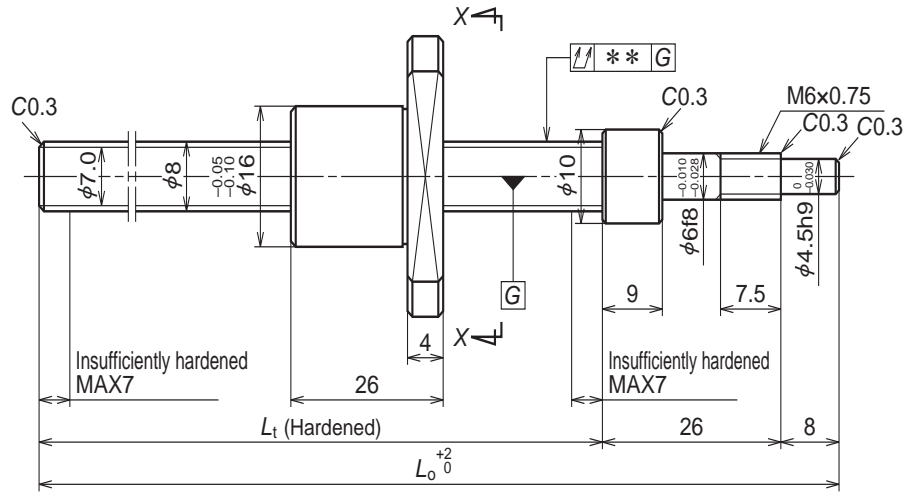
Ball screw specification		
Shaft dia.xLead / Direction of turn	8×1.5/Right	
Ball recirculation	Deflector	
Ball dia. / Ball circle dia.	1.000/8.3	
Screw shaft root dia.	7.0	
Effective turns of balls	1×3	
Accuracy grade / Axial play code	Ct7/S	
Basic load rating (N)	Dynamic C_a	810
	Static C_{0a}	1590
Axial play	0.020 or less	
Dynamic friction torque (N·cm)	1.0 or less	
Spacer ball	None	
Factory pre-packed grease	Refer to the remarks 2.	
Recommend support unit		
WBK06R-11	(Round, fixed side)	

Unit: mm

Ball screw No.	Stroke		Screw shaft length	
	Nominal	Maximum (L_t -Nut length)	L_t	L_0
RMA0801.5C7S-180	100	124	146	180
RMA0801.5C7S-280	200	224	246	280

Lead accuracy			Shaft run-out**	Mass (kg)	Permissible rotational speed N (min ⁻¹)
Target compensation T	Deviation e_p	Variation v_{300}			
0	0.052	0.052	0.060	0.093	3000
0	0.085	0.052	0.090	0.13	3000

- Remarks
1. We recommend NSK support bearing kit (page B445).
 2. Only rust preventive oil is applied at time of delivery. Please apply lubricant (oil or grease) before use. Refer to page D13 on details.
 3. Permissible rotational speed is determined by a d-n value and a critical speed. See page B169 and page B51.



Unit: mm

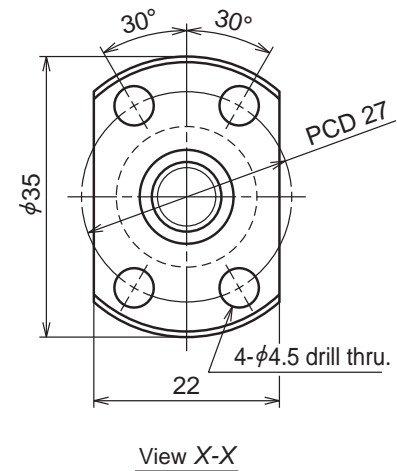
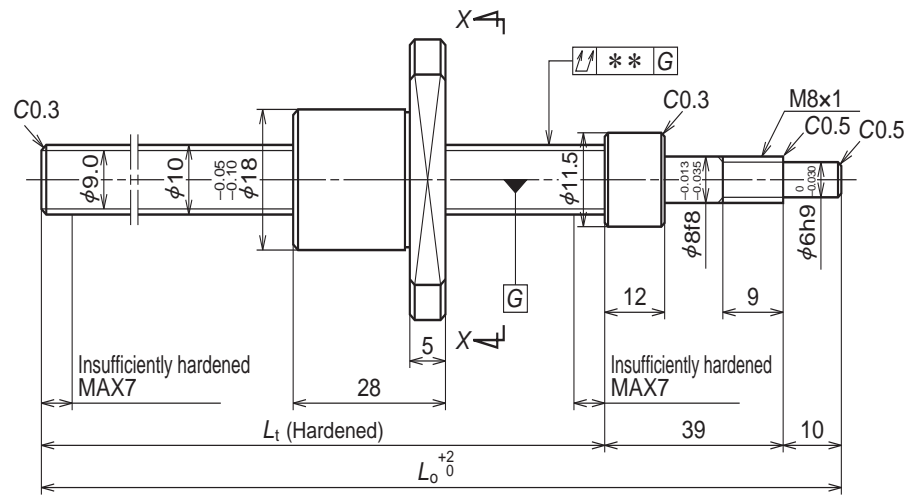
Ball screw specification		
Shaft dia.xLead / Direction of turn	8×2/Right	
Ball recirculation	Deflector	
Ball dia. / Ball circle dia.	1.200/8.3	
Screw shaft root dia.	6.9	
Effective turns of balls	1×3	
Accuracy grade / Axial play code	Ct7/S	
Basic load rating (N)	Dynamic C_a	1070
	Static C_{0a}	1950
Axial play	0.020 or less	
Dynamic friction torque (N·cm)	1.0 or less	
Spacer ball	None	
Factory pre-packed grease	Refer to the remarks 2.	
Recommend support unit		
WBK06R-11	(Round, fixed side)	

Unit: mm

Ball screw No.	Stroke		Screw shaft length	
	Nominal	Maximum (L_t -Nut length)	L_t	L_o
RMA0802C7S-180	100	120	146	180
RMA0802C7S-280	200	220	246	280

Lead accuracy			Shaft run-out**	Mass (kg)	Permissible rotational speed N (min ⁻¹)
Target compensation T	Deviation e_p	Variation v_{300}			
0	0.052	0.052	0.060	0.10	3000
0	0.085	0.052	0.090	0.14	3000

- Remarks
1. We recommend NSK support bearing kit (page B445).
 2. Only rust preventive oil is applied at time of delivery. Please apply lubricant (oil or grease) before use. Refer to page D13 on details.
 3. Permissible rotational speed is determined by a d-n value and a critical speed. See page B169 and page B51.



Unit: mm

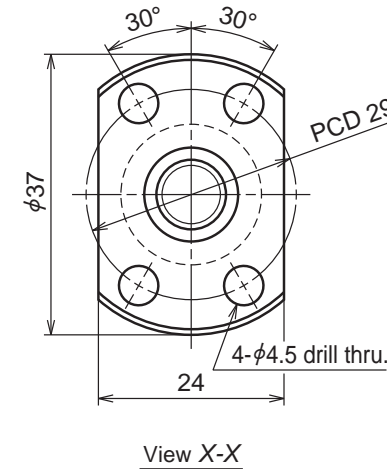
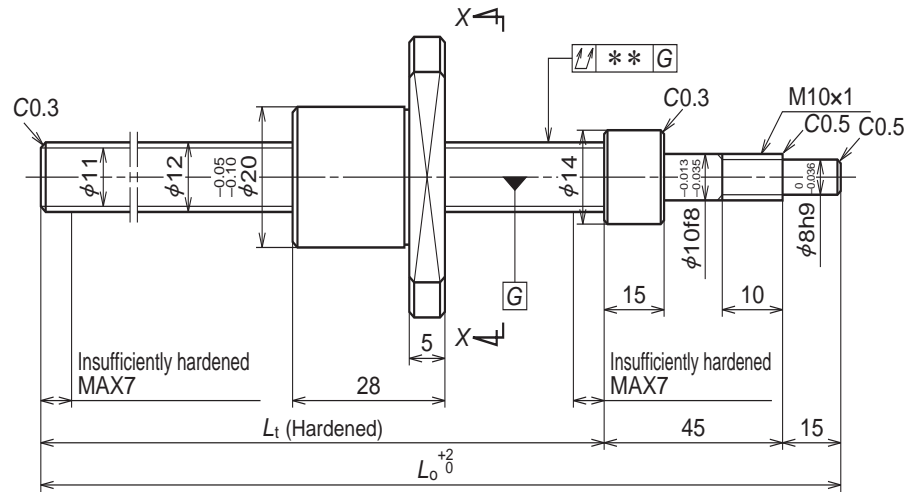
Ball screw specification		
Shaft dia.xLead / Direction of turn	10x2/Right	
Ball recirculation	Deflector	
Ball dia. / Ball circle dia.	1.200/10.3	
Screw shaft root dia.	8.9	
Effective turns of balls	1x3	
Accuracy grade / Axial play code	Ct7/S	
Basic load rating (N)	Dynamic C_d	1210
	Static C_{0a}	2510
Axial play	0.020 or less	
Dynamic friction torque (N·cm)	1.0 or less	
Spacer ball	None	
Factory pre-packed grease	Refer to the remarks 2.	
Recommend support unit		
WBK08-01A	(Square, fixed side)	
WBK08-11	(Round, fixed side)	

Unit: mm

Ball screw No.	Stroke		Screw shaft length	
	Nominal	Maximum (L_t -Nut length)	L_t	L_0
RMA1002C7S-250	150	173	201	250
RMA1002C7S-350	250	273	301	350

Lead accuracy			Shaft run-out** ↕	Mass (kg)	Permissible rotational speed N (min ⁻¹)
Target compensation T	Deviation e_p	Variation v_{300}			
0	0.085	0.052	0.070	0.19	3000
0	0.085	0.052	0.100	0.25	3000

- Remarks
1. We recommend NSK support bearing kit (page B445).
 2. Only rust preventive oil is applied at time of delivery. Please apply lubricant (oil or grease) before use. Refer to page D13 on details.
 3. Permissible rotational speed is determined by a d-n value and a critical speed. See page B169 and page B51.



Unit: mm

Ball screw specification		
Shaft dia.xLead / Direction of turn	12×2/Right	
Ball recirculation	Deflector	
Ball dia. / Ball circle dia.	1.200/12.3	
Screw shaft root dia.	10.9	
Effective turns of balls	1×3	
Accuracy grade / Axial play code	Ct7/S	
Basic load rating (N)	Dynamic C_a	1350
	Static C_{0a}	3190
Axial play	0.020 or less	
Dynamic friction torque (N·cm)	1.0 or less	
Spacer ball	None	
Factory pre-packed grease	Refer to the remarks 2.	
Recommend support unit		
WBK10-01A	(Square, fixed side)	
WBK10-11	(Round, fixed side)	

Unit: mm

Ball screw No.	Stroke		Screw shaft length	
	Nominal	Maximum (L_t -Nut length)	L_t	L_o
RMA1202C7S-250	150	162	190	250
RMA1202C7S-350	250	262	290	350

Lead accuracy			Shaft run-out**	Mass (kg)	Permissible rotational speed N (min ⁻¹)
Target compensation T	Deviation e_p	Variation v_{300}			
0	0.060	0.052	0.070	0.26	3000
0	0.085	0.052	0.100	0.34	3000

- Remarks
1. We recommend NSK support bearing kit (page B445).
 2. Only rust preventive oil is applied at time of delivery. Please apply lubricant (oil or grease) before use. Refer to page D13 on details.
 3. Permissible rotational speed is determined by a d-n value and a critical speed. See page B169 and page B51.